



Get ready for connection

Go to the App Store, download "Hi Thermostat" app and install it. Then create an account with your email address and sign in; Ensure you are connected to your WiFi network, keep your phone, your thermostat, and your WiFi router as close as possible.

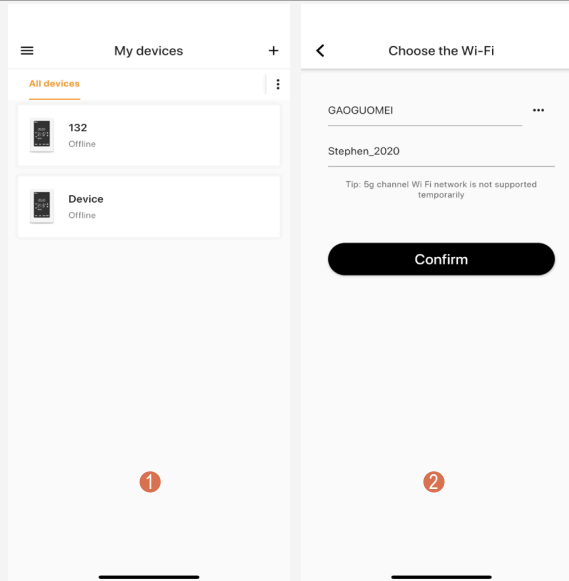
- 1 On your thermostat, press POWER to turn your thermostat off
- 2 Press and hold the top right corner of your thermostat for about 5 seconds until you see "Menu 11";
- 3 Press and hold the DOWN button until you see "REF", wait for a few seconds until the wifi symbol is flashing on screen.



Hi thermostat

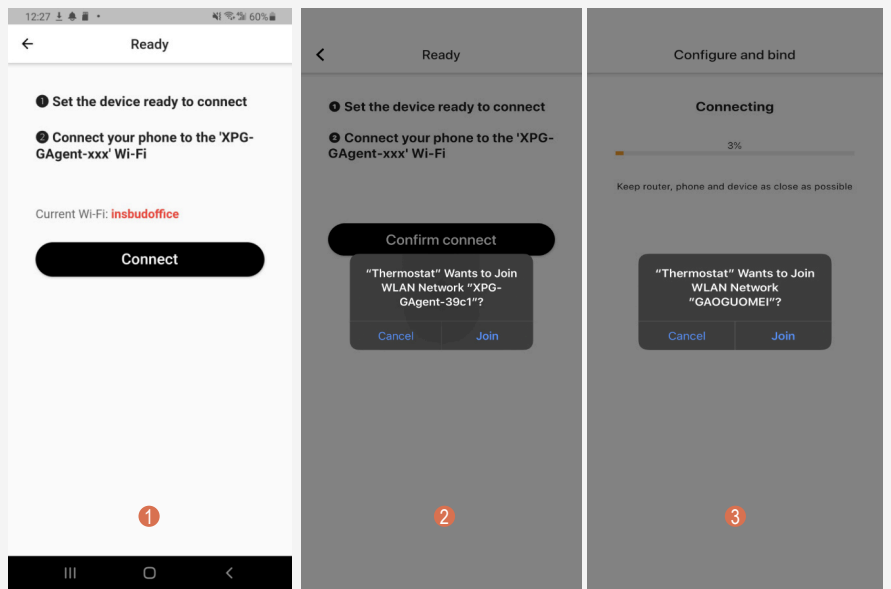
Step 1

- 1 Touch "+" on the top right corner of your phone to add a new device;
- 2 Enter your WiFi details. Please ensure you have selected the correct WiFi network and the password you enter is correct. Then press "Confirm".



Step 2

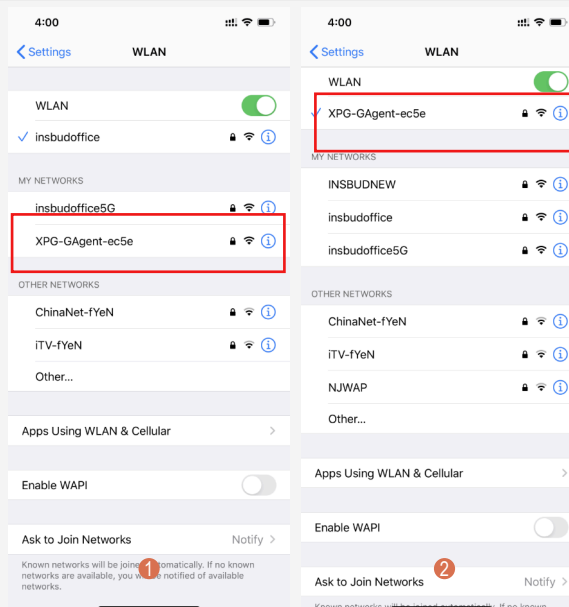
- 1 Press "Connect".
- 2 Press "Join" as your phone wants to join device's WiFi hotspot named XPG-GAgent-xxxx;
- 3 Press "Join" as your phone needs to go back to your original WiFi network. The connection process is automatically completed. Now your thermostat is accessible via the app.



Trouble Shooting

Some phones might not be able to join device's WiFi hotspot automatically. In this case, please do it manually. Follow steps below,

- 1 In Step 2, before pressing "Connect", please go to your phone's Settings - WLAN
 - 2 Connect your phone to device's WiFi hotspot named XPG-GAgent-xxxx;
- Once connected to XPG-GAgent-xxxx, return back to the thermostat App and follow Step 2 above





Get ready for connection

Go to Google Play, download “Temp Control” app and install it. Then create an account with your email address and sign in; Ensure you are connected to your WiFi network, keep your phone, your thermostat, and your WiFi router as close as possible.

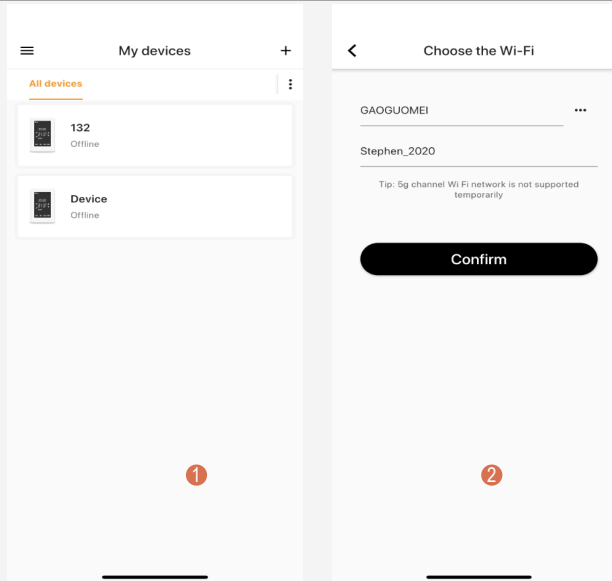
- ① On your thermostat, press POWER to turn your thermostat off
- ② Press and hold the top right corner your thermostat for about 5 seconds until you see “Menu 11”;
- ③ Press and hold the DOWN button until you see “REF”, wait for a few seconds until the wifi symbol is flashing on screen.



Temp Control

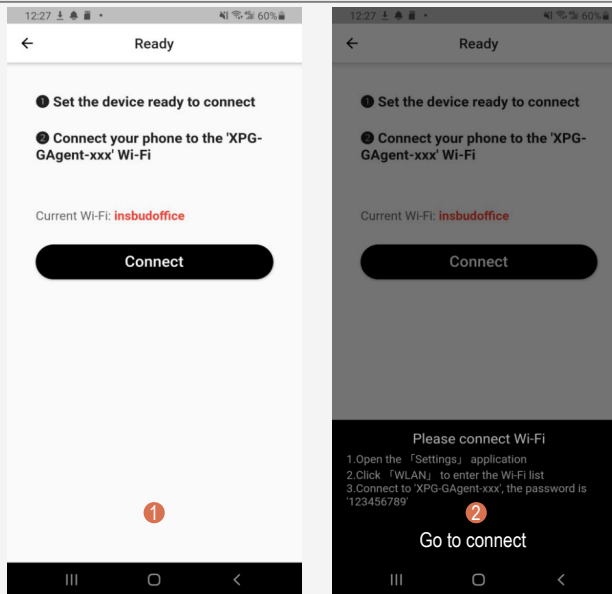
Step 1

- ① Touch “+” on the top right corner of your phone to add a new device;
- ② Enter your WiFi details. Please ensure you have selected the correct WiFi network and the password you enter is correct. Then press “Confirm”.



Step 2

- ① Press “Connect”.
- ② Press “Go to connect”.



Step 3

- ① Now your phone automatically goes to WLAN settings page.
- ② Connect your phone to device's WiFi hotspot named XPG-GAgent-xxxx;
- ③ Once connected to XPG-GAgent-xxxx, return back to the thermostat App and the connection process will automatically be completed. Now your thermostat is accessible via the app.

